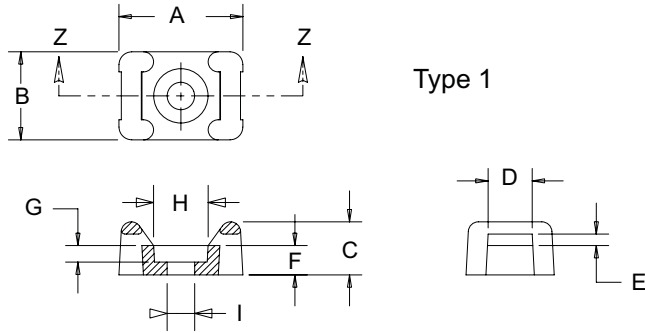
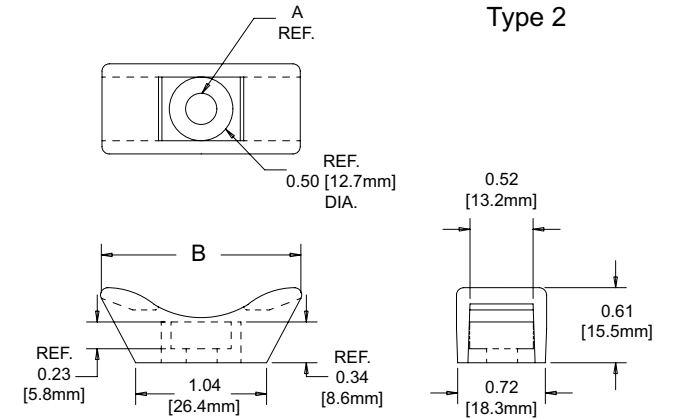


Series TMX



Article	A	B	C	D	E	F	G	H	I
TM2S6-C	0.630 (16)	0.425 (10.8)	0.275 (7)	0.215 \pm 0.020 (5.5 \pm 0.5)	0.060 (1.5)	0.155 (4)	0.090 (2.3)	0.286 (0.73)	0.151 (0.38)
TM2S8-M							0.105 (2.7)	0.332 (0.85)	0.176 (0.45)
TM3 S8-C	0.863 (21.9)	0.610 (15.5)	0.373 (9.4)	0.320 \pm 0.020 (8.1 \pm 0.5)	0.088 (2.2)	0.208 (5.3)		0.325 (0.8)	

Dimensions in inch (mm)



Article	A	B	SCREW
TMEH-S25-C0	0.260 (6.6)	1.620 (41.1)	1/4" (M6)