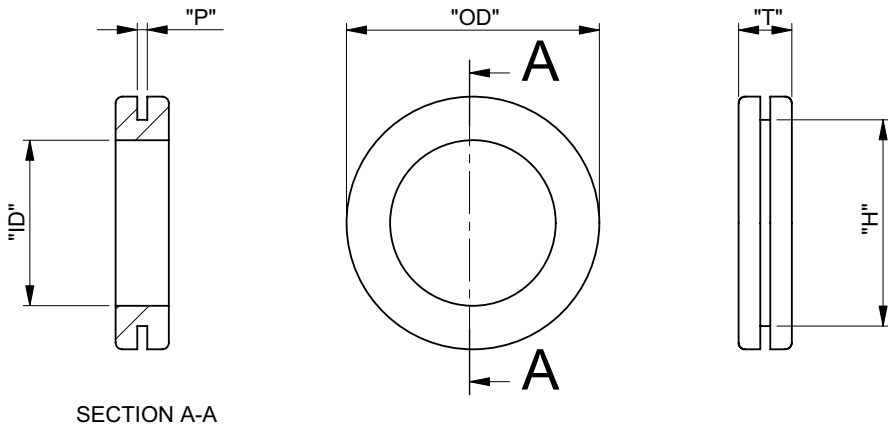


Dimensions in mm (inch)

Series LPR23



"ID"	"H"	"P"	"OD"	"T"	Article
3.2 [.126]	4.8 [.190]	1.6 [.063]	8.0 [.315]	6.4 [.252]	LPR 2300
4.0 [.148]	6.4 [.252]	1.6 [.063]	9.5 [.374]	6.3 [.248]	LPR 2301
4.8 [.188]	7.7 [.305]	0.8 [.032]	10.9 [.430]	4.8 [.188]	LPR 2302
5.5 [.217]	8.0 [.315]	1.6 [.063]	10.9 [.430]	5.5 [.217]	LPR 2303
6.4 [.252]	9.5 [.374]	2.4 [.095]	14.2 [.559]	7.0 [.276]	LPR 2304
8.0 [.313]	10.9 [.430]	1.6 [.063]	14.3 [.562]	4.8 [.188]	LPR 2305
9.5 [.374]	12.5 [.492]	1.6 [.063]	17.0 [.669]	7.0 [.276]	LPR 2306
12.6 [.495]	16.8 [.660]	1.6 [.063]	21.5 [.846]	6.4 [.250]	LPR 2307
14.2 [.558]	17.1 [.675]	1.6 [.063]	22.2 [.875]	4.8 [.188]	LPR 2308
15.5 [.610]	18.8 [.742]	1.6 [.063]	22.2 [.875]	5.6 [.219]	LPR 2309
17.1 [.672]	18.7 [.735]	1.6 [.063]	23.7 [.933]	4.8 [.188]	LPR 2310
18.6 [.734]	24.8 [.976]	1.6 [.063]	31.3 [1.234]	8.0 [.313]	LPR 2311
21.8 [.860]	25.1 [.990]	1.6 [.063]	30.2 [1.188]	8.0 [.313]	LPR 2312
24.6 [.970]	31.5 [1.240]	1.6 [.063]	38.1 [1.500]	8.0 [.313]	LPR 2313
8.0 [.315]	11.0 [.433]	2.0 [.079]	16.0 [.630]	7.0 [.276]	LPR 2314
12.7 [.500]	19.0 [.748]	2.4 [.095]	24.0 [.945]	7.1 [.280]	LPR 2315