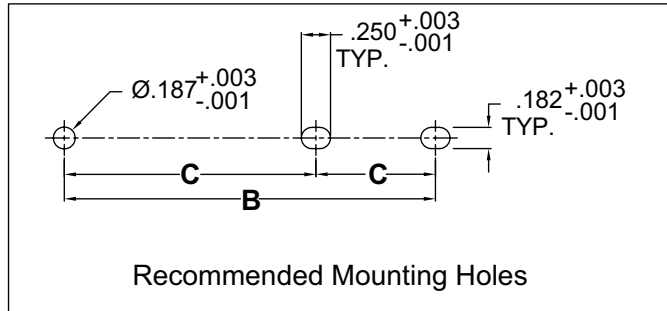
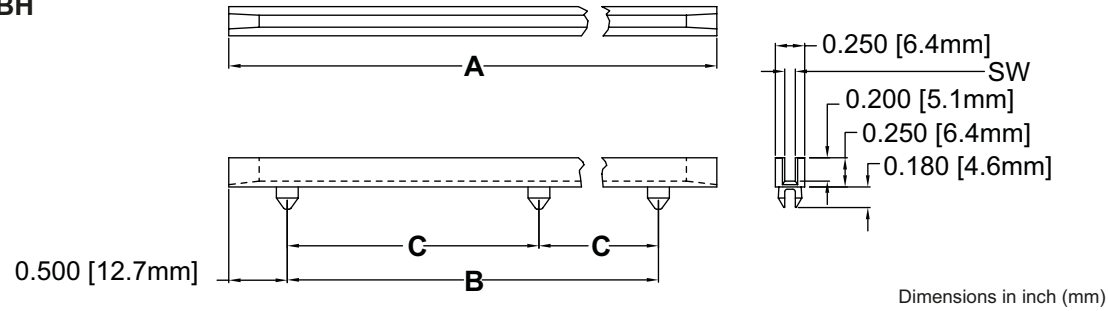


Series ELBH



Article	A $\pm.062$ (1.6)	B $\pm.032$ (.8)	C $\pm.015$ (.4)	S.W. $\pm.005$ (.1)	PCB THICKNESS
ELB H-063	2.5 (63.5)	1.5 (38.1)	-	.080 (2.0)	1/16 (1.6)
ELB H-101	4.0 (101.6)	3.0 (76.2)	-		
ELB H-114	4.5 (114.3)	3.5 (88.9)	-		
ELB H-127	5.0 (127.0)	4.0 (101.6)	-		
ELB H-139	5.5 (139.7)	4.5 (114.3)	-		
ELB H-152	6.0 (152.4)	5.0 (127.0)	-		
ELB H-165	6.5 (165.1)	5.5 (139.7)	-		
ELB H-177	7.0 (177.8)	6.0 (152.4)	-		
ELB H-190	7.5 (190.5)	6.5 (165.1)	-		
ELB H-203-2	8.0 (203.2)	7.0 (177.8)	3.5 (88.9)		
ELB H-101-2,4	4.0 (101.6)	3.0 (76.2)	-	.102 (2.6)	3/32 (2.4)
ELB H-114-2,4	4.5 (114.3)	3.5 (88.9)	-		
ELB H-127-2,4	5.0 (127.0)	4.0 (101.6)	-		
ELB H-139-2,4	5.5 (139.7)	4.5 (114.3)	-		
ELB H-152-2,4	6.0 (152.4)	5.0 (127.0)	-		
ELB H-165-2,4	6.5 (165.1)	5.5 (139.7)	-		
ELB H-177-2,4	7.0 (177.8)	6.0 (152.4)	-		
ELB H-190-2,4	7.5 (190.5)	6.5 (165.1)	-		
ELB H-203-2,4	8.0 (203.2)	7.0 (177.8)	3.5 (88.9)		
ELB H-114-3,2	4.5 (114.3)	3.5 (88.9)	-		
ELB H-152-3,2	6.0 (152.4)	5.0 (127.0)	-		
ELB H-203-2-3,2	8.0 (203.2)	7.0 (177.8)	3.5 (88.9)		