

Data Sheet for Precision Potentiometer

Conductive Plastic Potentiometer

Series MP22/23



The MP22/23 potentiometers in 22 mm metal housing are for applications where precise long-lasting and compact sensors are important.

- Long life and accuracy
- With or without mechanical end stop
- Compact sensor with low installation depth of 12 mm
- Potentiometer with many options

The conductive plastic potentiometer MP22/23 (MP21 with mech. end-stop) is a multi-talent which is adaptable for a wide range of applications.

Note: The MP23 versions with stop are also used as manual controls

Electrical Data	MP22	MP23
Effective electrical angle of rotation 1.)	320° ±5°	320° ±5°
Total resistance 1.)	0.5 up to 100 kOhm	
Resistance tolerance	±5%	
Independent linearity (best straight line) 1.)	±1%	
Theoretical resolution	Nearly infinite	
Backlash (Hysteresis) 1.)	≤ 0,5°	
Max. / recommended wiper current 1.)	10 µA / 2 µA	
Power rating @ 70°C (0W @ 105°C)	1 W	
Insulation Voltage 1.)	500 VAC, 1min	
Insulation Resistance 1.)	1000 MOhm @ 500 VDC	

Mechanical Data, Environmental Conditions, Miscellaneous	MP22	MP23
Mechanical angle of rotation	360° without stop	320° +10° with stop
Lifetime (90% el. eff. angle half sine) 2.)	10 Mio. rotations	
Max. operational speed	400 rev. / min.	
Bearing	Sleeve bearing	
Operational torque @ ambient temperature 1.) 2.)	5 Nmm	
End stop torque 1.) 2.)	-	90 Ncm
Operating temperature range	-55..+105°C	
Storage temperature range	-55..+105°C	
Protection grade (IEC 60529)	IP40	
Protection option D shaft sealing (IEC 60529)	IP65 optional	
Vibration (IEC 68-2-6, Test Fc)	15g 10..2000Hz x 12h	
Shock (IEC 68-2-27, Test Ea)	49g @ 11 ms x 18	
Housing diameter	22 mm	
Housing depth	12 mm	
Shaft diameter	6.00 mm (optional 6.35 mm)	
Shaft type	Solid shaft	

Data Sheet for Precision Potentiometer

Conductive Plastic Potentiometer

Series MP22/23

Mechanical Data, Environmental Conditions, Miscellaneous	MP22	MP23
Max. radial load		≤1 N
Max. axial load		≤1 N
Connection type		Gold plated solder pins
Connection position		Axial
Sensor mounting		Bushing
Mass		30 g
Fastening parts included in delivery		Nut, toothed washer
Fastening torque mounting nut		150 Ncm
Material shaft		Stainless steel
Material housing		Nickel-plated brass

1.) According IEC 60393

2.) Determined by climatic conditions according to IEC 68-1, para. 5.3.1 without load collectives

Please note: Max. permissible supply voltage <75 VDC respectively <50 VAC in addition the max. power rating must be observed

Order code

Beschreibung	Selection: standard=black/bold , possible <i>options=grey/italic</i>									
Series	MP									
Angle of rotation with / without mecha. Stop:										
Without stop	22									
With stop	23									
Resistance value:										
<i>Option 500 Ohm</i>				<i>R500</i>						
1 kOhm				R1k						
<i>Option 2 kOhm</i>				<i>R2k</i>						
5 kOhm				R5k						
10 kOhm				R10k						
<i>Option 20 kOhm</i>				<i>R20k</i>						
<i>Option 50 kOhm</i>				<i>R50k</i>						
<i>Option 100 kOhm</i>				<i>R100k</i>						
<i>Option rear shaft:</i>										
<i>Standard Ø3,00 x 20 mm</i>					<i>RA</i>					
<i>Shaft length in mm</i>					<i>RAxx,xx</i>					
<i>Shaft diameter in mm (≤3 mm)</i>					<i>RADMx,xx</i>					
Resistance tolerance:										
±5%							W5%			
Independent linearity:										
±1%							L1%			
<i>Option center tap:</i>								<i>CT</i>		
Option front shaft:										
Standard Ø6.00 x 22 mm										
<i>Option Ø6.35 x 22 mm</i>										
<i>Option shaft length in mm</i>										
<i>Option shaft diameter in mm (≤6.35 mm)</i>										
<i>Option screwdriver slot:</i>										
										<i>B</i>
Shaft sealing:										
Standard is without sealing:										
<i>Option D with shaft sealing</i>										<i>D</i>

For higher quantities or on-going demand, additional options are available as described below on request

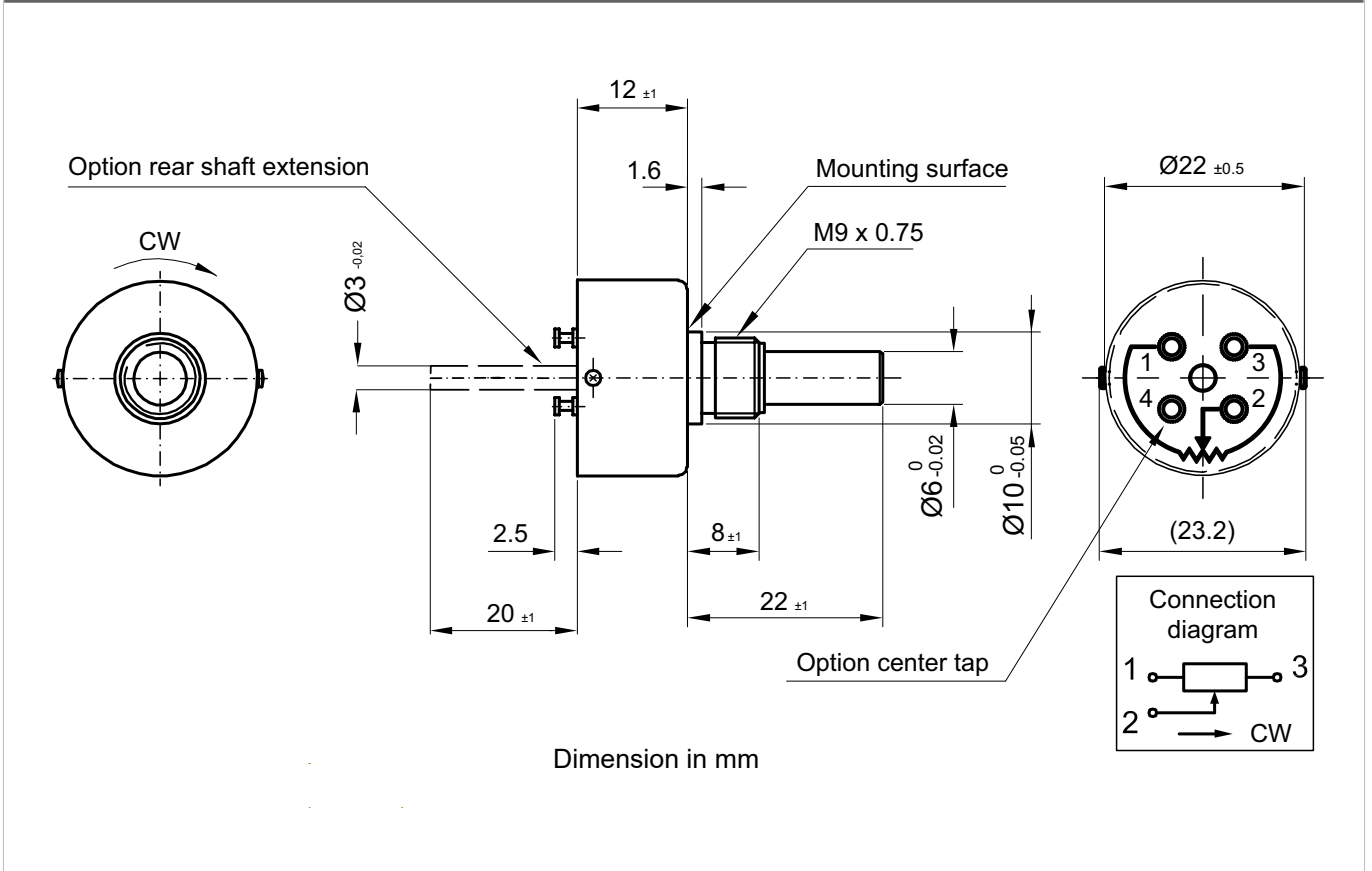
For Example: Sealed housing case, special electrical and mechanical angles of rotation, and special resistance and linearity tolerances. Furthermore we can mount gear wheels or attach cable assemblies with or without connectors and much more.

Data Sheet for Precision Potentiometer

Conductive Plastic Potentiometer

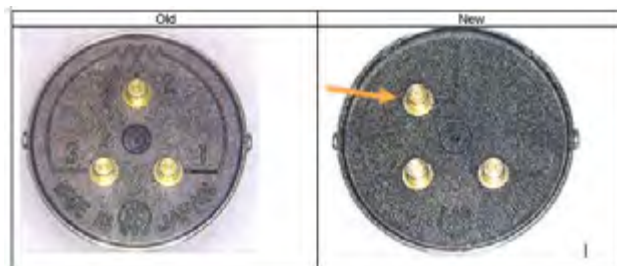
Series MP22/23

Drawing



Please note

Until around July 2024, deliveries could include the old version



On Request: Special machining on shaft

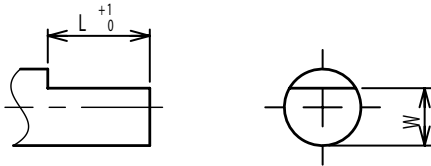
Slot



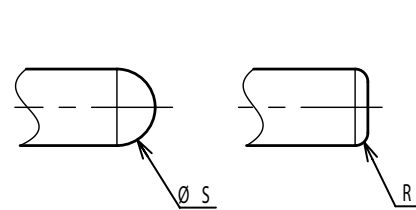
Groove



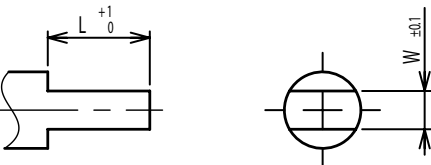
Flat



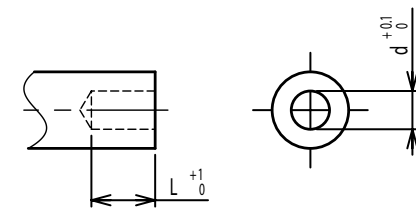
Round top



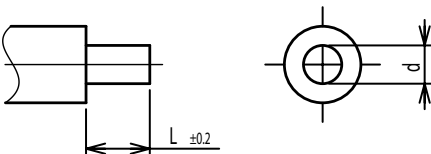
Double side flat



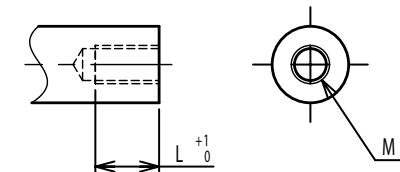
Counterbore hole



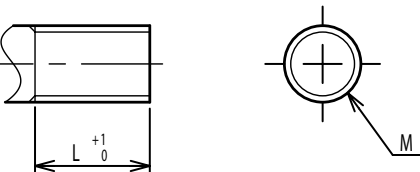
Step



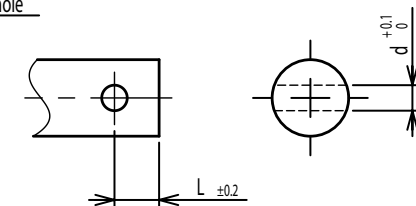
Counterbore screw hole



Screw Thread



Pin hole



Knurled(Parallel)



Screw thread inside hole

